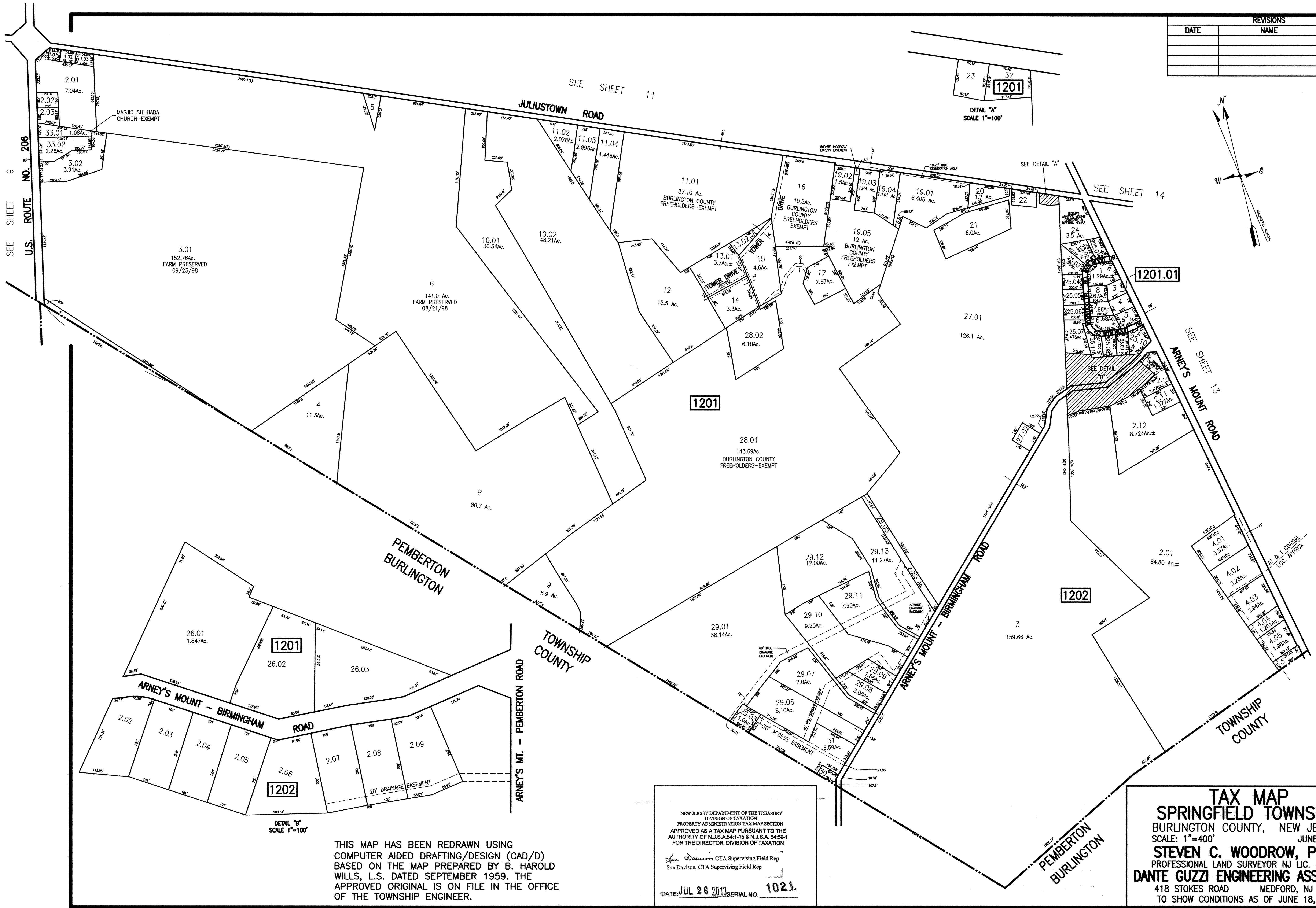


REVISIONS		
DATE	NAME	NO.



THIS MAP HAS BEEN REDRAWN USING  
COMPUTER AIDED DRAFTING/DESIGN (CAD/D)  
BASED ON THE MAP PREPARED BY B. HAROLD  
WILLS, L.S. DATED SEPTEMBER 1959. THE  
APPROVED ORIGINAL IS ON FILE IN THE OFFICE  
OF THE TOWNSHIP ENGINEER.

NEW JERSEY DEPARTMENT OF THE TREASURY  
DIVISION OF TAXATION  
PROPERTY ADMINISTRATION TAX MAP SECTION  
APPROVED AS A TAX MAP PURSUANT TO THE  
AUTHORITY OF N.J.S.A.54:1-15 & N.J.S.A. 54:50-1  
FOR THE DIRECTOR, DIVISION OF TAXATION  
*Sue Dawson* CTA Supervising Field Rep  
Sue Dawson, CTA Supervising Field Rep  
DATE: JUL 26 2013 SERIAL NO. 1021

**TAX MAP**  
**SPRINGFIELD TOWNSHIP**  
BURLINGTON COUNTY, NEW JERSEY  
SCALE: 1"=400' JUNE, 2013  
**STEVEN C. WOODROW, P.L.S.**  
PROFESSIONAL LAND SURVEYOR NJ LIC. #27514  
**DANTE GUZZI ENGINEERING ASSOCIATES**  
418 STOKES ROAD MEDFORD, NJ 08055  
TO SHOW CONDITIONS AS OF JUNE 18, 2013